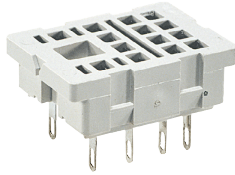


Sockets and accessories

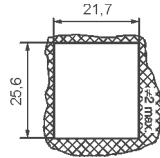
SU4/2L

For R2N

Solder terminals
29,6 x 21,5 x 18,1 mm
Two poles
12 A, 250 V AC



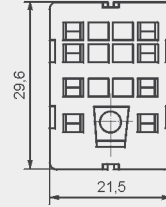
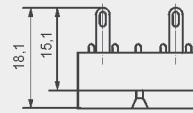
Dimensions of opening on panel mounting



Accessories

G4 1053 G4 1040

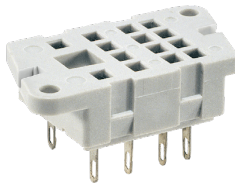
Dimensions



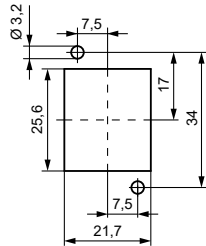
G4/2

For R2N

Solder terminals
40,5 x 21,5 x 18,1 mm
Two poles
12 A, 250 V AC



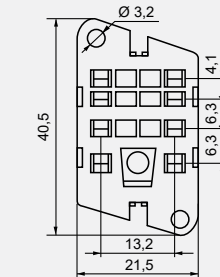
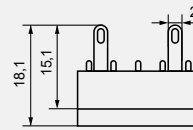
Pinout of openings on panel mounting



Accessories

G4 1053

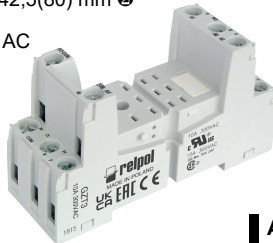
Dimensions



GZT3

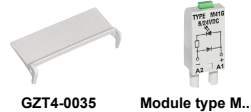
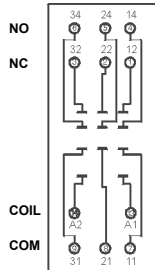
For R3N

Screw terminals
Max. tightening moment
for the terminal: 0,7 Nm
35 mm rail mount
acc. to EN 60715
or on panel mounting
76,3 x 27 x 42,5(80) mm
Three poles
10 A, 300 V AC



Connection diagram

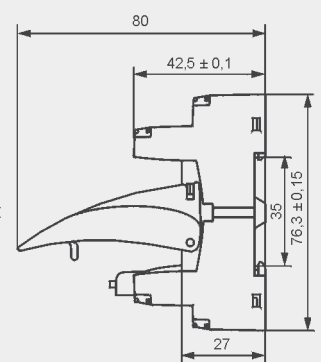
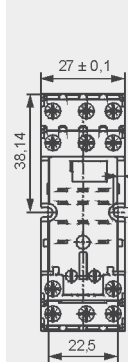
[Installation instruction](#)



Accessories

GZT4-0035 Module type M...

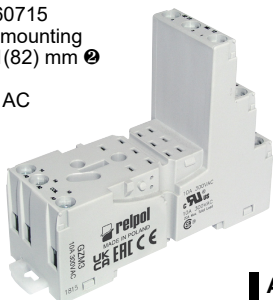
Dimensions



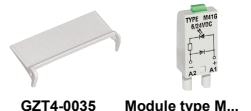
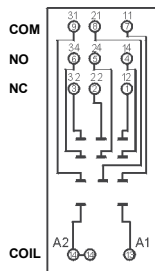
GZM3

For R3N

Screw terminals
Max. tightening moment
for the terminal: 0,7 Nm
35 mm rail mount
acc. to EN 60715
or on panel mounting
75 x 27 x 61(82) mm
Three poles
10 A, 300 V AC



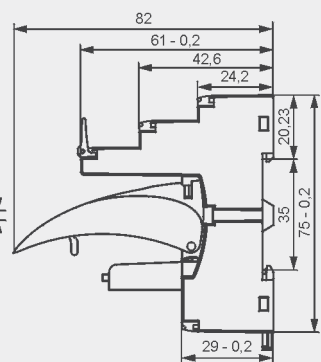
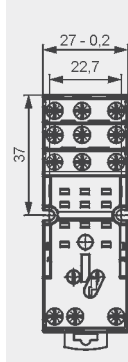
Connection diagram



Accessories

GZT4-0035 Module type M...

Dimensions



① Mounting and sub-assemblies of accessories in the socket; Signalling / protecting modules type M... - see www.repol.com.pl
② In the bracket the height of socket with retainer / retractor clip is shown.